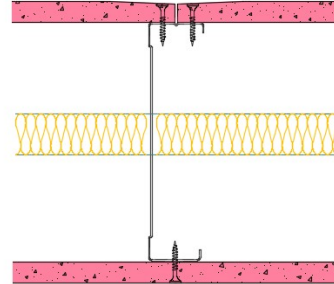


146-S-55(25) - SPEEDLINE System Data Sheet - Version V1 (24-10-23)

SPEEDLINE 146mm 'C' Stud Partition @600mm
Ctrs, with Siniat GTEC 12.5mm Fire Board each
side, 25mm APR



System Performance Breakdown

Fire Resistance:

BS476 Part 22:1987:

Test Ref & Date or Applied Ref & Report:

Max Height:

Thickness:

Duty Grade: BS 5234: Part 2:1992:

Sound Insulation:

30/30 Minutes (Integrity/Insulation).

BRE 269826 - BRE Report P102396-1011C

Refer to Speedline Specification Clause

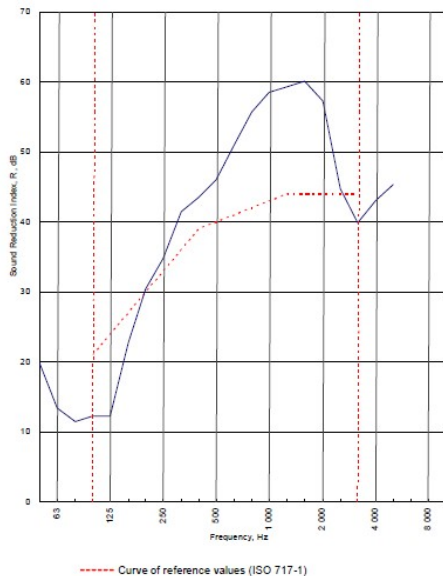
173 mm. (At Base Track, Excluding Finishes)

Medium - Annexes A-F

40 $R_{w,dB}$, Date Tested or Assessed Against - 70-S-51(25)

Test Code:
H17461AA
Test Date:
01/07/2011

Freq. Hz	R dB
50	19.7
63	13.4
80	11.4
100	12.3
125	12.3
160	22.7
200	30.4
250	34.8
315	41.5
400	43.5
500	46.0
630	51.0
800	55.7
1 000	58.6
1 250	59.3
1 600	60.1
2 000	57.3
2 500	44.8
3 150	39.9
4 000	43.1
5 000	45.3
6 300	
8 000	
10 000	



Rating according to
BS EN ISO 717-1:1997
 $R_w (C;Ctr) = 40 (-5;-11) dB$
Max dev. 11.7 dB at 125 Hz

Evaluation based on laboratory
measurement results obtained by
an engineering method:

$C_{50-315} = -5 dB$	$C_{50-500} = -4 dB$	$C_{100-500} = -4 dB$
$C_{125-150} = -13 dB$	$C_{125-500} = -13 dB$	$C_{125-500}^2 = -11 dB$

TESTED AT ONE OF THE UKAS
ACCREDITED LABORATORIES
BELOW

B.T.C
(H-Ref on Graph)

B.R.E

AIRO

S.R.L

Customer: **Metsec plc Hespsec Division**

BTC 17461A: Page 9 of 11



SPEEDLINE Drywall Systems, Adsetts House, 16 Europa View, Sheffield Business Park, Sheffield, S9 1XH.

Tel: 0114 231 8030.

Email: enquiries@speedlinedrywall.co.uk

(As per the requirements set out in ISO/IEC 17025:2017 regarding test data the results stated have been carried out by voestalpine Metsec plc as part of the contract to supply Speedline Metal Sections to SIG Plc)